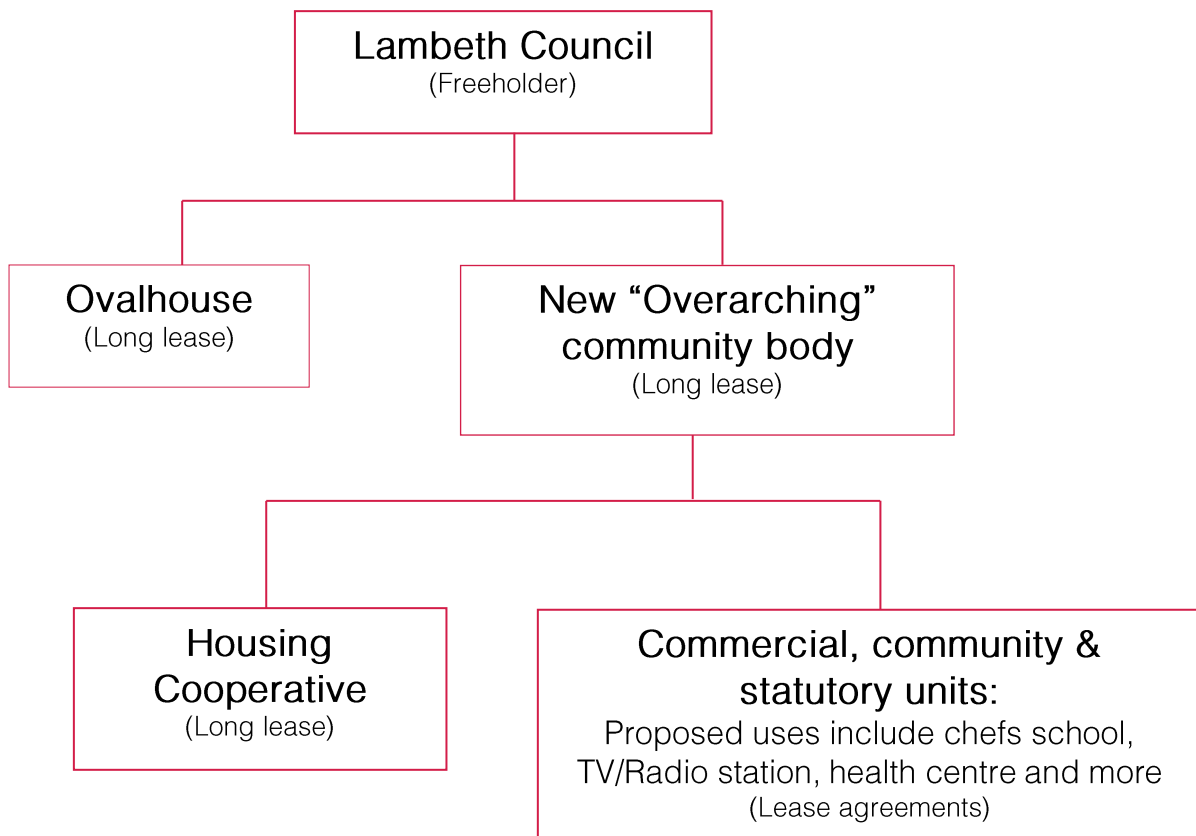


How will it be run?

You said...

- Ensure long-term resident control
- Make sure the new development is inclusive
- Create good quality, long-term jobs and training and support local Businesses
- Only work with commercial interests that complement the community's ambitions

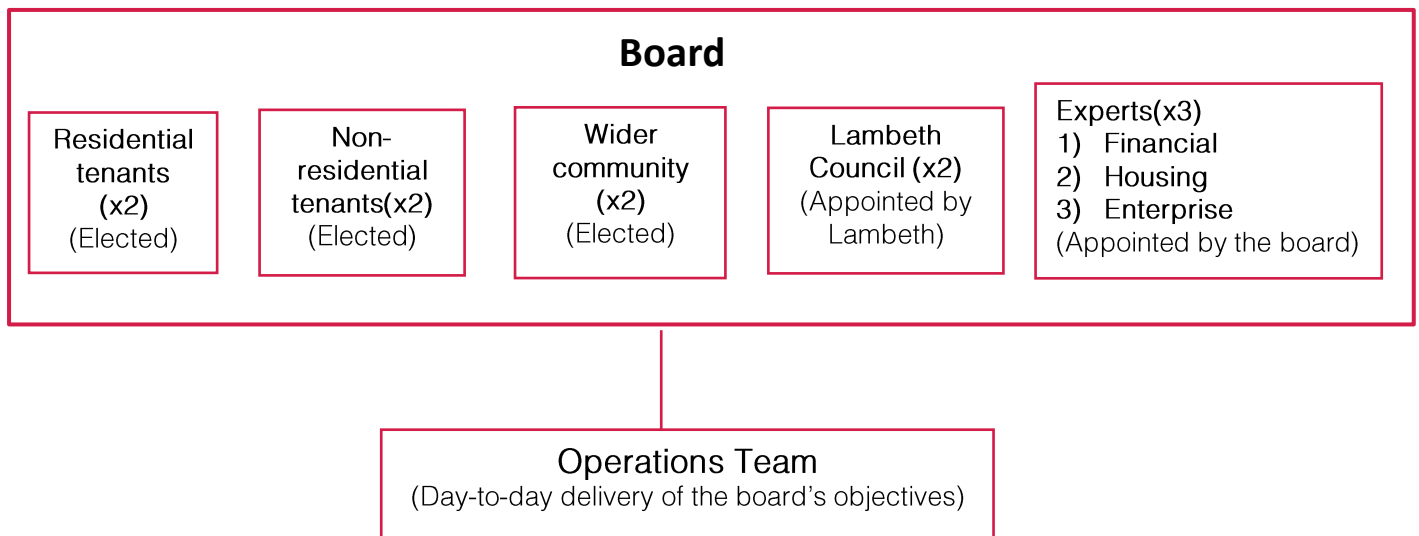
Current ideas:



There will be agreements between Lambeth and the new community body:

- To ensure the community aspirations are delivered by the new community body and they remain accountable to the local community.
- To ensure the new community body services the loan. The Council will have 'step in' rights to protect the Council's financial investment in the development.
- To provide a percentage of the housing for Lambeth's housing waiting list.
- Terms by which the community body will manage the public realm.

Who could be on the board of the new community body?



Who could be able to vote?

- 1) **Residential trustees:** Elected by the membership of the Housing Cooperative
- 2) **Non-residential trustees:** Elected by the organisations occupying the commercial, community and statutory units on the site.
- 3) **Wider community trustees:** Elected by anyone over 16 years old who lives or works within a specified geographic area (*Who should this be? please see tasks below*)

Role of the board:

- 1) Ensure the body honours its legal and financial responsibilities.
- 2) Ensure the body adheres to its objectives
- 3) Oversee the operations team & appoint the operations director.
- 4) Strategic decisions such as rebuilds, major expenditure & lease decisions or change of tenant mix.

Tasks for today:

- Who should elect the wider community trustees?
 - Should this be anyone over 16 years old who lives or works in Brixton?
 - Which specific area should the voters live or work in? *Within the 5 wards of Brixton, within a specific distance such as 1 or 2 miles from the site, or within specific roads?*
 - Should people who use the services, such as registered at the health centre, also be allowed to vote?

A partnership between

